



Enlighten
DESIGN STUDIO

BY RTM ENGINEERING CONSULTANTS

The success of RTM Engineering Consultants is built from a foundation of core values and a purpose personified through its people. With a rich history in design that started in 1981, RTM offers a range of engineering services including mechanical, electrical, plumbing, civil, structural, specialized lighting design, technology, acoustics, and building systems commissioning for a variety of buildings.

By creating tailored solutions on each project, RTM's professional consulting services enhance systems across multiple market sectors including hospitality, custom homes, commercial, healthcare, government, K-12 and higher education.

Embracing our core values of collaboration, unity, excellence, respect, and trust, Enlighten Design Studio listens to project needs, provides innovative solutions, and helps clients meet project goals. Whether providing specialty lighting design services alongside our engineering team, or as a standalone service, our team is obsessed with what matters to our clients.

Tailored Lighting Solutions

Concept design charrette · Photometric calculations

Architectural luminaire selection

Decorative luminaire selection · Landscape lighting

Custom luminaire coordination

Sample fixture review · Architectural ceiling coordination

Lighting detail coordination · Decorative fixture review

Lighting controls system design · Lighting mockups



Enlighten DESIGN STUDIO

BY RTM ENGINEERING CONSULTANTS

WHY ENLIGHTEN DESIGN STUDIO?

RTM's in-house architectural lighting design studio was born out of a desire to showcase specialty lighting and integrate into the company's other professional services. The Enlighten Design Studio team beautifully melds lighting aesthetics and design principles with a strong foundation in electrical engineering and lighting controls expertise. The team's passion is collaboration to create refined and unique spaces, where lighting is used to enhance architecture and foster an environment where people thrive. Dedicated to thoughtful design that seamlessly blends beauty and functionality, our specialty lighting team transforms lighting into an art form within the built environment.



MARKETS

Hospitality | Residential | Commercial

SPACES

**Luxury Homes | Resorts and Hotels | Amenities
Spas | Restaurants | Entertainment | Retail
Galleries, and more**

Enlighten Design Studio Team



anna-lisa.conners@rtmec.com

Anna-Lisa Conners CLD, LC, CLEP, LEED Green Associate Senior Lighting Project Director

17 years experience, B.S. Architectural Engineering, University of Colorado at Boulder

Lighting Passion: Melding the science and beauty of light

Anna-Lisa is passionate about partnering with clients to gain a deep understanding of project needs and goals before ever setting pen to paper. Her end goal is for the user to enjoy every minutia of their space, from a seamless lighting design to an effortless control experience.



courtney.lunsford@rtmec.com

Courtney Lunsford CLCP, Associate IALD | Senior Lighting Project Lead

14 years experience, B.S. Interior Design and Business Administration, Colorado State University

Lighting Passion: Nurturing client relationships and lighting controls design

Her ability to envision a space and passion for comprehensive design and whole building systems ensures designs are highly functional and approachable. Through collaboration with teaming partners, Courtney provides highly distinctive yet approachable lighting and lighting control solutions.



tia.nord@rtmec.com

Tia Nord LC | Senior Lighting Project Lead

30 years experience, M.S. Civil Engineering for Building Systems (Lighting Engineering), University of Colorado at Boulder, B.S. Interior Design, Colorado State University

Lighting Passion: Finding the unique architectural features in the space and bringing them to life.

Tia enjoys the combined creativity and technical sides of lighting design. Her background in interior design, complemented by lighting engineering, helps her to visualize the architectural environment and understand how light will interact within a space.



tanya.pardo@rtmec.com

Tanya Pardo CLD | Senior Lighting Project Lead

14 years experience, B.A. Design - Interior Architecture & Lighting, University of California - Davis

Lighting Passion: Perfecting lighting details

Tanya enjoys working in a collaborative environment and is passionate about enhancing architecture with discrete lighting details. Believing lighting design is less about lights and more about enhancing and transforming a space, Tanya loves the ability to change the mood in any room with a simple touch of a button.



bianca.bunces@rtmec.com

Bianca Bunces | Lighting Designer II

2 years experience, B.S. Architecture with Sustainability Studies (minor), University of Colorado Denver

Lighting Passion: Creating unique lighting concepts and designs

As a lighting designer, Bianca brings her innovative vision to life by meticulously illuminating spaces. With a forward-thinking approach, she combines creativity and attention to detail in every project she undertakes. Her unique talent for design concepting is invaluable in shaping the ambiance of the spaces she works on.



maryia.pupkevich@rtmec.com

Mary Pupkevich | Lighting Designer III

5 years experience, M.S. & B.S. Thermal Power Engineering, Belarusian National Technical University

Lighting Passion: Transforming spaces with innovative lighting concepts that promote well-being

Mary's passion for lighting design is fueled by her belief that lighting is not just about illuminating a space, but also about enhancing its unique features, and influencing the emotion of the end user. Mary's dedication to her craft ensures that every project is completed with excellence, showcasing her meticulous attention to detail.

Markets

Enlighten Design Studio by RTM provides clients and projects a wide array of specialty lighting design services. Our team believes in a collaborative approach to design, where discrete architectural lighting accentuates materials and complements decorative lighting.

PORTFOLIO HIGHLIGHTS

HOSPITALITY & ENTERTAINMENT



The Farm at Brush Creek



Lone Rock Retreat



Ulery's Lake Lodge

Hotel Alpenrock Curio by Hilton, Breckenridge, CO | Full Service Hotel

The Aerie at Copper Mountain, Frisco, CO | Restaurant and Entertainment

Eglise Lodge at Yellowstone Club, Big Sky, MT | Restaurant and Entertainment

The Farm at Brush Creek, Saratoga, WY | Luxury Entertainment and Event Venue

Ulery's Lake Lodge, Big Sky, MT | Condo in Hospitality, *LEED Certified*

W Hotel, Aspen, CO | Full Service Hotel

Three Forks Spa Expansion, Savery, WY | Full Service Hotel

Elway's Downtown Ritz-Carlton, Denver, CO | Restaurant and Entertainment

Foothills Golf Course Clubhouse Renovation, Denver, CO | Recreation Facilities

Inn at Spanish Peaks, Big Sky, MT | Condo in Hospitality

Lone Rock Retreat, Bailey, CO | Corporate Retreat

Club Wyndham Resort, Avon, CO | Condos in Hospitality

Ohkay Casino Lounge and Bar, Ohkay Owingeh, NM | Restaurant and Entertainment

The Highlands at Harbor Springs - Main Lodge Renovation, Harbor Springs, MI | Full Service Hotel

Village at Northstar, Truckee, CA | Ski Village, *LEED Certified*

www.enlightendesignstudio.com

RESIDENTIAL

28+
SIMILAR
PROJECTS

Flats Sanctuary Residence, Aspen, CO | Custom Homes

River Ranch Residence, Gypsum, CO | Custom Homes

One Riverfront Condominiums, Avon, CO | Condo in Hospitality

Star Mountain Residence Remodel, Aspen, CO | Custom Homes

Spanish Peaks Branded Residences, Big Sky, MT | Custom Homes

Red Mountain Estate, Aspen, CO | Custom Homes

Summit Haus, Snowmass Village, CO | Custom Homes

Tazi Ranch, Larkspur, CO | Custom Homes

The Blake Residences, Taos Ski Valley, NM | Condo in Hospitality

Four Seasons Vail Cloud 9 Residence, Vail, CO | Condo in Hospitality

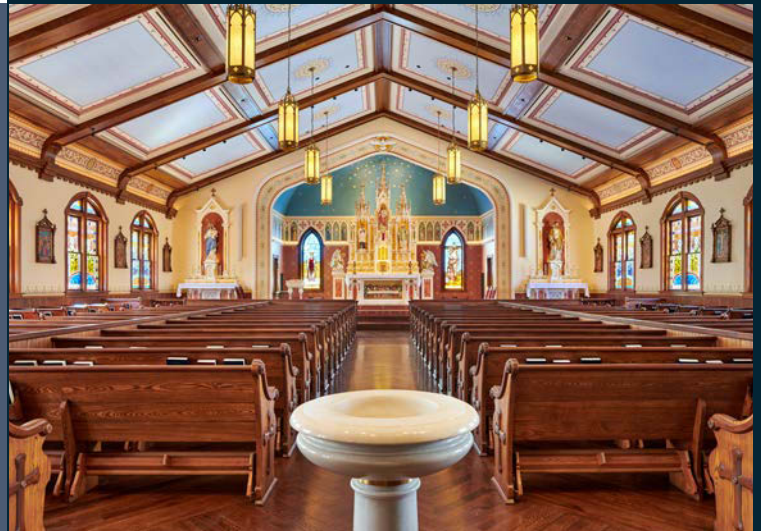
Modera Cook Street, Denver, CO | Apartments and Amenities

First Plaza, Albuquerque, NM | Apartment/Townhomes

Downriver Residence Remodel, Aspen, CO | Custom Homes



Four Seasons Vail Cloud 9 Residence



St. Mary's Catholic Church

COMMERCIAL

35+
SIMILAR
PROJECTS

Aspen Middle School, Aspen, CO | Education PK-12, *LEED Gold*

Belmar Library Renovation, Lakewood, CO | Library

LC Pflugerville Amenities Building, Pflugerville, TX | Mixed Use

Denver Office Renovation, Denver, CO | Office, *WELL*

Spanish Peaks Ski Yard, Big Sky, MT | Recreation Facilities

St. Mary's Catholic Church, Aspen, CO | House of Worship

Treehouse Kids' Adventure Center Remodel, Snowmass Village, CO | Recreation Facilities



LC Pflugerville Amenities Building | Rendering courtesy of OZ Architecture



LIGHTING
DESIGN
AWARDS

Honorable Mention, 2022



Cover Image: Hotel Lobby | Inset Image: Bar

W Hotel Aspen, CO

Careful consideration was given to seamlessly integrating lighting with every architectural detail throughout the hotel. Sources were located to bring sparkle to mirrored metallics or provide depth to sculptural geometric forms.

Architectural ceiling coordination • Architectural luminaire selection • Concept design charrettes • Decorative fixture review • Lighting controls system design • Lighting detail coordination

The project: Slopeside to Aspen Mountain, the new hotel has 88 guestrooms, 11 fractional residences, 3 spas, and a dynamic F&B program with a 12,000 SF rooftop bar and pool.



The Farm at Brush Creek

Saratoga, WY

In order to make this space really come to life at night, BG spent several days and nights on site aiming the lighting to highlight artwork, sculptures, and displays.

Aim and focus site visits • Architectural ceiling coordination • Architectural luminaire selection • Concept design charrettes • Decorative fixture review • Emergency/egress lighting calcs • Lighting controls system design • Lighting detail coordination • Lighting mockups • Photometric calculations • Sample review

The project: A 30,000 acre ranch offering 5-star amenities including dining, retail, brewery, distillery, wine tasting, meeting spaces, and an event pavilion.



Cover Image: Spirit Bar | Inset Image: Lounge



Lone Rock Retreat Bailey, CO

Architectural lighting was closely coordinated with the interior and architecture teams to integrate with the architecture and accent important features and finishes.

Architectural ceiling coordination • Architectural luminaire selection • Concept design charrettes • Decorative fixture review • Emergency/egress lighting calcs • Landscape lighting • Lighting controls system design • Lighting detail coordination • Lighting mockups • Photometric calculations • Sample review

The project: Retreat campus with a plethora of amenities, including cabins, meeting spaces, restaurants, lounge, fitness, and a spa.

Cover Image: Main Lodge Stairs | Inset Image: Lounge



Hotel Alpenrock Curio by Hilton
 Breckenridge, CO

New lighting was coordinated to blend in with the modern mountain aesthetic. Custom gondola pendants draw guests into the hotel.

Architectural ceiling coordination • Architectural luminaire selection • Concept design charrettes • Decorative fixture review • Emergency/egress lighting calcs • Lighting controls system design • Lighting detail coordination • Lighting mockups • Photometric calculations • Sample review

The project: 208 guest rooms and a suite of amenities spaces, including ballrooms, meeting rooms, restaurant, bar, and fitness room, were updated and upbranded to become a Curio.



Cover Image: Lobby Bar | Inset Image: Entry Lobby



Cover Image: Dining | Inset Image: Wine Storage Display

Eglise Lodge Big Sky, MT

The restaurant's design harmoniously blends modern elegance with rustic elements, creating a seamless connection with the surrounding landscape. Lighting enhances the spatial volume while highlighting every key design detail.

Architectural ceiling coordination • Architectural luminaire selection • Concept design charrettes • Decorative fixture review • Lighting controls system design • Lighting detail coordination • Site lighting design • Lighting mockups • Photometric calculations

The project: A fine-dining restaurant nestled into the side of the mountain at Big Sky's Yellowstone Club.



The Aerie at Copper Mountain

Frisco, CO

The lighting scheme beautifully accentuates the architectural materials, grazing across the warm wood ceilings and accenting the industrial concrete walls.

Architectural ceiling coordination • Architectural luminaire selection • Concept design charrettes • Decorative fixture review • Lighting controls system design • Lighting detail coordination • Photometric calculations

The project: This 23,000 sq ft lodge boasts a variety of dining options, including cafeteria-style dining, a formal restaurant, a cozy café, and two vibrant bars.



Cover Image: Restaurant | Inset Image: Bar



Cover Image: Dining and Kitchen | Inset Image: Bathroom

Four Seasons Vail Cloud 9 Residence

Vail, CO

Architectural lighting was designed to disappear, while enhancing the interior architecture and finishes. This allowed the modern decorative lighting to really make a statement.

Architectural ceiling coordination • Architectural luminaire selection • Concept design charrettes • Decorative fixture review • Lighting controls system design • Lighting detail coordination • Lighting keypad elevations • Lighting mockups • Photometric calculations

The project: With beautiful views of Vail Mountain, this nearly 4,500 SF private 8th floor resort residence has five bedrooms and five bathrooms.



The Blake Residences

Taos Ski Valley, NM

Thoughtfully placed recessed lighting offers a warm color temperature throughout the residences to complement the warm finishes and highlight southwestern design elements.

Architectural ceiling coordination • Architectural luminaire selection • Concept design charrettes • Decorative fixture review • Emergency/egress lighting calcs • Lighting controls system design • Lighting detail coordination • Photometric calculations

The project: Nestled within the awe-inspiring Taos Ski Valley, you'll find this residential complex of 24 private homes located in the heart of the village.

Cover Image: Living and Kitchen | **Inset Image:** Building Exterior





Cover Image: Dining and Living | **Inset Image:** Exterior
Renderings courtesy of Forum Phi, lighting additions by Enlighten



Alpine Solace Residence Aspen, CO

The modern aesthetic extends through the layered architectural lighting, highlighting a hallway gallery space, custom wine storage room, and showcasing unique finishes.

Architectural ceiling coordination • Architectural luminaire selection • Concept design charrettes • Decorative fixture review • Lighting controls system design • Lighting detail coordination • Site lighting design • Lighting mockups • Photometric calculations

The project: A stand alone single story custom residence with a full basement, complimentary pool guest house, and beautifully landscaped site.



Tazi Ranch Residence

Larkspur, CO

Lighting design prioritized maintaining clean architectural lines. Natural textured materials were accentuated using exterior ingrade uplights, and using a discrete linear wall slot detail to provide a wash of light on the interior.

Architectural luminaire selection • Concept design charrettes • Decorative fixture review • Lighting controls zoning • Lighting detail coordination • Photometric calculations

The project: Settled on a 128-acre site, this custom home harmoniously blends a modern design aesthetic with natural materials.



Cover Image: Exterior Courtyard | Inset Image: Kitchen Millwork



Mason Morse Office
Aspen, CO

Lighting was selected with minimal profiles for clean lines and was integrated into coves and wall slots to create visual interest. The two-story stone feature wall was grazed with light above and below to bring out textural depth.

Architectural ceiling coordination • Architectural luminaire selection • Lighting controls system design

The project: Remodel of a 7800 SF building for new real estate office, including the two-story entry lobby, several private offices, client meeting rooms, and break room.

Cover Image: Staircase | Inset Image: Front Lobby



Treehouse Kids' Adventure Center
Snowmass Village, CO

Linear fixtures were selected as the general lighting to blend in with linear acoustical ceiling tiles, mimicking a tree canopy. Discrete linear lighting was also integrated behind the wooden soffit, creating a halo of light.

Architectural ceiling coordination • Architectural luminaire selection • Concept design charrettes • Emergency/egress lighting calcs • Lighting controls system design • Lighting detail coordination • Photometric calculations

The project: Multi-level, 2,300 SF space where childcare and ski school program converge for a convenient destination for vacationing families.



Cover Image: Check-in Lobby | Inset Image: Lobby



Cover Image: Childrens' Reading Area | Inset Image: Entry Lobby



Belmar Library Renovation Lakewood, CO

The entry lobby was designed to be flexible, serving functions from illuminating kiosks to community artwork and book displays. Lighting also contributed to the playful atmosphere of the Childrens' zone, utilizing varying sizes of round recessed and suspended light fixtures.

Architectural ceiling coordination • Architectural luminaire selection • Concept design charrettes • Emergency/egress lighting calcs • Lighting controls system design • Photometric calculations

The project: The renovation reorganized the library's floor plan, making the main service desk the central hub from which patrons can access diverse services.



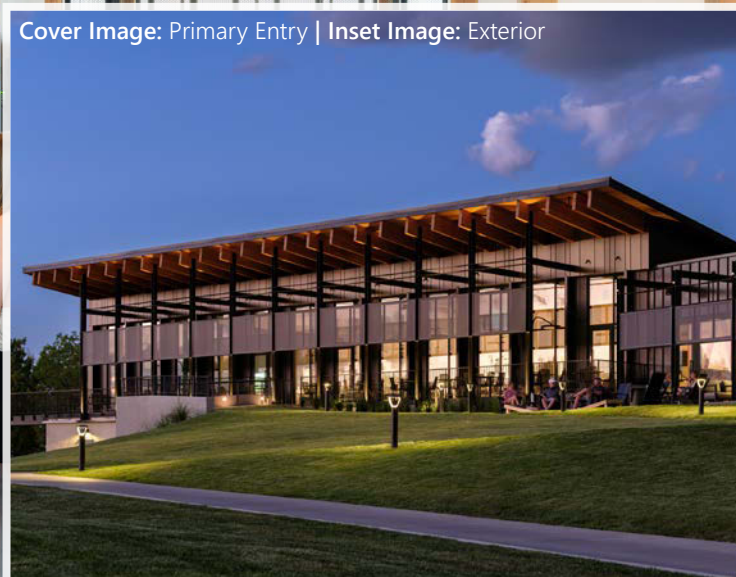
Foothills Golf Course Clubhouse Renovation
Lakewood, CO

Uplighting is used to draw the eye up, highlighting the building's volume. The exterior lighting design considers safety and aesthetics, ensuring that pathways, parking areas, and entranceways are well-lit.

Architectural ceiling coordination • Architectural luminaire selection • Concept design charettes • Emergency/egress lighting calcs • Lighting controls system design • Photometric calculations

The project: The clubhouse is situated on the renowned 36-hole public course and features a bar, restaurant, pro shop, and exterior patio.

Cover Image: Primary Entry | Inset Image: Exterior





Cover Image: Sanctuary | Inset Image: Church Exterior

St. Mary's Catholic Church

Aspen, CO

Lighting played a crucial role in this major remodel, highlighting the altar, stations of the cross, as well as architectural ceiling features. Care was taken to conceal lighting within new millwork details, placing the focus on the ornate architectural detailing and sacred art.

Architectural ceiling coordination • Architectural luminaire selection • Concept design charrettes • Lighting controls system design • Lighting detail coordination • Photometric calculations

The project: The church remodel focused on bringing new life and warmth to this historic building, while maintaining its character.



Harry Teague Architects
Image: Timothy Hursley Photography

Bucksbaum Campus

Aspen, CO

The building is distinguished by its prominent exterior backlighting, casting a gentle nighttime glow that is mirrored in the adjacent pond.

Architectural ceiling coordination • Architectural luminaire selection • Concept design charrettes • Lighting controls system design • Lighting detail coordination • Photometric calculations

The project: This campus is cultural and educational center that hosts a diverse range of artistic programs, including visual arts, music, and performing arts.



Cover Image: Exterior | Inset Image: Music Room



See our website for additional project photography

Enlighten DESIGN STUDIO

BY RTM ENGINEERING CONSULTANTS